

The New Port News
210



July 2003

for

SFPA 234

210 The New Port News 210

Ned Brooks, 4817 Dean Lane, Lilburn GA 30047-4720

770-982-5062 or nedbrooks@sprynet.com

<http://home.sprynet.com/~nedbrooks/home.htm>

OO - Jeff - Got the mailing on June 9. Thanks for the extra copy of the *Leftover Quotations*!

Uncle Lon's Unofficial Box Scores - Brown - So my *It Goes on the Shelf* will no longer be counted? I will sink to about halfway down the list. I suppose I could print "special SFPA edition" on the cover!

Variations - Lynch - I didn't understand Hughes comment about "nasty unsupported political mudslinging" in SFPA either. I certainly never do any such thing! Pleasant well-documented political mudslinging, maybe.

I have seen deer here - even in my driveway - but I have yet to spot any damage to the shrubbery.

Tyndallite - Metcalf - The 2.14 volts of the sodium mercury battery is at the high end of such electrochemical reactions, but I don't find it in either of my CRC volumes that give many other such examples. I wonder if Verne knew how poisonous mercury is - the expression "mad as a hatter" was already current, but how many then knew that the hatters were mad because they used mercury in making "beaver" hats?

Nice - Hlavaty - I agree with you about ambient music in public places - I find most popular music so distasteful that it distracts me from whatever I went there for in the first place.

The OED notes the possible connection between *codger* and *cadger* - but then traces *cadger* to 1796 but *codger* to 1756 with the spelling *cojer*. I would guess that *cojer/codger* for an old man came first, and *cadger* derived because some of the old men were *cadgers*.

Twygdrasil - Dengrove - Sorry to hear about your father. And your mother's situation is distressing too.

I thought I had Sprague deCamp's **Lost Continents** but I don't. I see that he also mentions **The Scarlet Empire** in **The SF Handbook Revised**, but only one paragraph and nothing about it being ghostwritten.

One of these days the OED will appear in electronic form at a price I'm willing to pay.... As it is, the microprint edition is adequate for the frequency I use it.

The original French text of **The Wandering Jew** seems to be online - but password protected and I don't see how to register. If it's available on interlibrary loan I could probably get it through Denny Lien.

You are right about Hank and Toni being pro-gun. In point of fact, Hank has had a .45 welded to an old WWII helmet with a servo-motor at the trigger so he can fire it by frowning.

I read **Orlando** many years ago, and about all I remember of it now is the preponderance of tedium. Still, it's something a collector of weird books would have to look at, like **Voyage to Arcturus** and the Zimiamvian trilogy.

I don't know what size Boy George Dubya really is - the image on the TV could be an actor or computer-generated - but judging from his speech and actions, he's an evil dwarf.

Revenant - Sheila - The California-accented LotR is the audio version that comes in a long wooden box with colorful paper labels pasted on. Or at least that's what I remember - I don't seem to have it anymore. There is one from Bantam that runs 13 hours, but it's in a cardboard box and I haven't opened it.

Actually, anything you see in the woods that looks like a sasquatch probably is a fan - a media fan in a Wookiee suit.

Your church group must know a lot more about Cuba than I do. Comfort and prosperity are relative - Cuba has too many people for its resources, but they seem to be better off than most of Africa. Castro's recent oppression is unpleasant (though he is way behind Dubya as far as executions go) but I would still favor dropping the embargo - my guess is he would fade into history soon enough, whereas retaining it will just give his successor a propaganda issue.

Your SFPA flag elements need to be coordinated - I would recommend a redhead in brass lingerie wearing a propellor beanie and typing with one hand while firing a zap gun at a BEM with the other. Maybe we could get Taral to do the artwork.

Frequent Flyer - Feller - I tried a push mower once in Virginia - I think I pushed it once, then it sat in the garage until I gave it away. But I've never owned a gasoline mower - I settled on a battery-powered electric mower. I have two of them, a 25-year-old Sears that uses a common auto battery, and a 10-year-old Ryobi that uses a 24-volt sealed battery and mulches. I still get plenty of exercise pushing them around.

I like hammer dulcimer music. There's a good bit of it on the Richard Fariña albums, and the local Tidewater folksinger Bob Zentz was good on it too.

The Sphere - Don - Look out Hank doesn't frown at you. Eric Ferguson III (anyone remember III from the old DSCs?) claims he has a surplus SCUD aimed at me from Merritt Island. But he aimed it NW and I am more like NNW of there.

Peter Pan & Merry - Schlosser - Whatever I said about turkey bacon would have been intentional nonsense.... I suppose tobacco is a sort of natural resource to Cuba as long as they can find fools to sell it to - coca is a natural resource to Colombia too, and hairless rats to Mexico as long as people want Chihuahuas.

The "minimum total boundary length" forms the geometric figure we call a "circle". Not generally useful in political redistricting.

It seems to me - having had the experience of running the same mimeo with and without the motor - that the automakers could have devised failsafe electric windows. That is, if the power failed or the motor burned out, you could crank the windows by hand as Ghod intended.

Your p.3 has two half-inch-wide vertical *lacunae*, tsk tsk.

Avatar - Cleary - Fork? What fork? Is this Yogi Berra's "fork in the road"?

Yngvi - Toni - I have listened to stuff through the PC, but not streaming radio.... WFUV sounds pretty good. Here I switch between the NPR station WABE, which does a lot of classical, the Georgia Tech student station WREK which will do anything and puts out a better signal with 40 kilowatts than WABE does with 100 kilowatts, and WRFG (Radio Free Georgia) which also has

100 kilowatts but needs a better engineer.

I don't know whether our occupation of Iraq is all that exemplary or just benefiting from sanitized coverage - there are apparently several thousand Iraqi prisoners in badly run concentration camps that don't come anywhere near meeting the standards of the Geneva Convention. The International Red Cross has not been allowed to see them.

Maybe the "chaste spouses" in the Koran is a typo or mistranslation for "chased spouses".... Their strict interpretation of the ban on "graven images" would make what we think of as civilization pretty much impossible.

When was the Koran written down? There must have been some lyricism in the oral original for it to be remembered.

You left my zine at Hank's house?! I thought I had felt an odd semi-psycho pressure....

Oblio - Brown - The popular magazine for children in Chile in the 40s was called *El Peneca* - it carried some comic strips and some text, on pulp paper with crude color printing. I think the strips were reprints, but I'm not sure. One was *Durga Rani, Reina de la Selva*, a jungle-girl thing; and another had some kids zooming around the world in a vehicle that could be a car, a boat, a plane, or a spaceship as the plot required. There was a historical strip about some unfortunate noblewoman named Braganza too.

I have no objection to the basic idea of doing **Treasure Island** in outer space, but from the trailers they kept running this particular animated whizbang looked like frantic crap to me.

Proud of You - Copeland - I did a "Reply-All" to George Wells' online SFPazine and one of the bounces was from an "Allie" whose mailbox had overflowed. George needs to purge his list....

Ex-SFPAn Bill Bridget sent me a diskette with a megabyte ".wma" file of the Dixie Chicks' *White Trash Wedding*. I have no idea why - or why this should have been recorded at all, or why anyone bought it.... I guess there are things fan was not meant to know!

My recollection of Bogart's line in *Casablanca* (but it's been a while) is "Play it, Sam - you played it for her, you can play it for me." - though of course the punctuation may not be quite like that in the script. The "againess" is there, but not the word "again".

Armadillo - Liz - Glad to hear your surgery was so successful. Molly Ivins is right, as usual - I don't see much in the idea that New York's cops and firefighters should work overtime for free as a "wartime sacrifice". Let the sacrifice be spread over the taxpaying populace! No doubt such overtime is sometimes inevitable, but it should be avoided if possible in such high-stress jobs. Would you want to be operated by a brain surgeon on overtime?

Spiritus Mundi - Guy - Nice cover art, except for the face! Glad to hear you had a good time in the Antipodes. But you've read LotR and should know not to go adventuring without a bit of rope.

The Columbia could have been checked in orbit with an EVA, but I can understand that there was really very little to justify it at the time, and EVAs are not without risk. And the Shuttles don't carry a repair kit.

No, not Gephardt - there's a little-known law that US presidents must have eyebrows. Maybe he could borrow a pair.

Haven't heard any more about the Elizabeth Smart case in a while - apparently there is some question whether she was kidnapped at all. Or whether "Emmanuel" is even as mentally competent as a smart 12-year-old.

I don't know if Joe ever actually served on the jury. He now has a car, sort of - one of Mary's friends gave him a 1991 Nissan that had been sitting idle. The thing needs work on the electronics in the doors - after years of using a mimeo that you could crank by hand *or* run on a motor, it seems odd to me that the auto manufacturers could sell cars with windows that might not open or close because the motor burned out or a wire came loose or the battery died. This thing also has keyless locks.

The theory about the early demise of Dolly the cloned sheep is that the cell she was cloned from "remembered" how old the donor animal was at the time. At least this gives us some hope that the scenario of old rich guys cloning themselves indefinitely will never be a problem. Michelle Pfeiffer ain't no spring chicken either!

A Little Behind - *weber* - I don't think I was ever in Gainesville but once, and I've forgotten why. Good luck with the job hunt!

Trivial Pursuits - *Janice* - Makes you wonder how many other Jayson Blairs there are out there, turning in sloppily researched or invented stories. I have not heard any mention that he had been responsible for any very significant stories. It has been a truism for some time that if you read a newspaper story about anything you have personal knowledge of, you will find that they got some of it wrong.

Now I have deck problems - the big back deck is in bad shape - too close to the ground I think, and rotting out even though it's treated wood. Maybe even treated wood won't last over 25 years. In another way it's not close enough to the ground - something got under there and died, and the odor came up through the electric range. This range has an odd exhaust in the counter-level surface (instead of a hood above), and the exhaust goes out under the deck. I use it very little and never had occasion to use the exhaust. So I made a seal to block the exhaust pipe at the blower and put a "Do Not Operate" sign on the exhaust switch. I suppose one of these days I will have to have the deck replaced.

Tennessee Trash - *Robe* - I can't see that Bush has any "moral compass" - I think he's just a sock monkey held up by the Junta. What now in Iraq? Some 3200 Iraqis have been killed and a few more every day, not to mention (which no one does) the 1000s in concentration camps that we won't let the Red Cross visit. The infrastructure is wrecked, none of them seem to have any interest in our brand of democracy, and the mullahs are looking to set up a theocracy. Should we leave and let them settle it among themselves or stay and try to rebuild the place with so little cooperation from the "liberated"? Who will pay for the sweetheart contracts that Halliburton etc. have gotten? Maybe the UN would take on this great mess....

I was 25 before I could write for pleasure - and I owe it all to fandom.

I don't trust e-mail filters - but of course at 65 I am a bit beyond worrying about being corrupted by the WWW. The spam is a minor annoyance. The waves of virus attacks are more annoying - but none have hurt anything as yet.

I like the idea of anti-terrorist training in the airport concourses, which are deadly dull places for the most part. But could it be done without inspiring further anti-Moslem hysteria?

I think that originally black sorcery was considered a perversion of divine magic - a Black Mass is only possible as being the "opposite" of the normal rite. And certainly the Catholics retain some of this in the veneration of relics and saints - the procedure for beatification requires that some event of divine magic be "proven", that is, someone has to have been cured by invoking the aid of the candidate for sainthood. The Protestant sects are probably so dead set against this because it

was subject to so much abuse before the Reformation.

I never found calculus very traumatic, though I certainly had to acknowledge my limitations when I tried to pass a course in the "Foundations of Differential Calculus". But the memories I have lost do not seem to have been repressed - from the account of it I wrote at the time there is no reason to have repressed the memory of a visit to Dave Hulvey.

Just what is considered a significant "defect" in a roll of duct tape? I have yet to see one, though I have had the stuff fail with age.

Your 1979 photo looks very medieval!

Leftover Quotations - Copeland - Good stuff! Now of course you need to create indices to the set by author and subject....

* * *

This SFPazine seems to be running short of verbiage.... I am a bit under the weather at the moment. I had had a soreness in my mouth for a couple of months, finally had my dentist look at it. She sent me to another guru, and he said it looks like *lichen planus*. This is apparently a not particularly serious condition that they don't know the cause of. But this guru is quite aggressive - he took a biopsy sample to send to the lab and this involved enough surgery to require electro-cauterization and stitches. So now I have gauze in my mouth and have taken a pain pill called "Lortab". Hard to say how much it has reduced the pain, but I'm not supposed to drive. I don't feel that much side-effect and would drive if I had to. At least this pill doesn't give me stabbing pains in the scalp like the last one I tried, something called "Norco".

I suppose I could induce serious tedium with an account of my adventures in collecting antique typewriters. I just got a WWI-vintage Oliver 9 for \$70 on eBay - not a particularly rare machine, but I was attracted by the fact that it came with a second 14-inch-wide carriage that could be mounted in place of the standard 9-inch-wide carriage. This was put up for auction by a dealer in the Indiana boonies, and he wouldn't accept PayPal or credit cards, and waited for my check to clear before shipping the thing. With old typewriters there is always a concern about damage in transit - the cast iron frames won't take but so much shock-load before they crack. It was shipped by USPS in a used cardboard box, but with a lot of Polish peanuts, mixed with shredded paper. A devil of a mess to clear away. But I was lucky, there seems to have been no damage. If I was doing it I would have inclosed the machine and the packing material in separate plastic bags to reduce the mess and in case the box got wet.

This typewriter was heavily used at one time, and then left to sit somewhere. But after I got all the Polish peanuts and shredded paper out of the works, and lubricated the carriage wheels, and replaced the tension cord and retensioned the spring drum, it works pretty well. I still need to clean the typeslugs. The long carriage is not as worn as the short one, but has suffered some damage to the platen surface. If I wanted to get fancy, there is a company that will replace the platen rubber.

The Oliver was a popular machine in its time, mostly with people who liked its durability and didn't plan to move it often. It weighs 30 lbs. Nor did it ever win any typing speed contests. But you can see what you are typing - there were still "blind" writers in use at the time, where the typeslug struck the bottom of the platen - and the usual utilities such as 2-color ribbon and tabs. There is also a device for "ruling" - you could put a pencil in a holder and make horizontal or

vertical lines on the paper by moving the carriage or turning the platen.

The Oliver was the only popular machine that didn't put the typeslug on the end of a type bar (or on a rotating element, like the Selectric). As you can see in the photo, the typeslug is in the middle of a loop or arch that swings down from the side to bring the type against the ribbon and the paper. A sturdy design, but there are two major disadvantages - the nested arches rising above the platen impede the typist's view of the paper; and the weight and double hinging make the action slow as compared to say an Underwood of the same vintage.

Note that there are only three rows of keys - this is a "3-bank" typewriter and each typeslug has three symbols on it. To access them the mechanism has two shift levers - the normal position gives the lower-case letters, and one shift is for upper-case while the other, which shifts the carriage in the opposite direction, brings it in line to type numbers or punctuation and special symbols such as the @ # \$ % & and so on.

In spite of the weight, the Oliver could technically be considered a "portable" because it came on a wooden base with a sheet-metal cover that had a handle on top so that with the cover latched to the base, the machine could be carried in one hand like a suitcase. This particular machine has lost its case, but I have two Oliver Model 3 machines in the original cases.

I am still working on annotating the typewriter inventory. Some of the entries have been fully annotated:

Typewriter Inventory - Beroaldus Cosmopolita Typewriter Museum - 6-11-03

Make	Model	Date	Serial No.	Style	Face	Pitch	Action	Loc
AMC			212287	man port	R	10	key	S7-1
11.25 lbs Carriage shift / no tab / carriage lock left below carriage Steel, white/grey plastic keytops 3-way Ribbon Control on Sector / Standard 1/2-inch spools SN on left side of frame crossbar under keyboard 88 keyboard has frac. 1/8-7/8, uses 1 for l Bolted to case base Grey deckle paint / case top missing Why does case base have feet on top as well as bottom?								
Adler	21c	1965	7369770	elec off	R	12	key	
Alpina		1957	204970	man port	R	10	key	S7-5
22.5 lbs Carriage shift / Tab & Tab +/- / Carriage lock (3-pos) under right end of carriage Steel, black/cream plastic keytops 3-way Ribbon Control on top right of keyboard / Standard 1/2-inch spools SN on left end of frame cross bar between left spool & carriage Graduated paper support 88 keyboard Lever release from case base Green/grey imit. alligator rigid case "Made in Western Germany" Why a 3-position carriage lock? 3rd pos. seems to lift carriage slightly								
Aztec	700		1909767	man port	R	11/44	key	S8-1
20.75 lbs Carriage shift, lock bottom left under frame edge Steel, white/black plastic keytops 3-way ribbon control on right of keyboard, standard 1/2-inch spools								

SN under right end of carriage
 Spring-loaded graduated paper support
 88 keyboard, frac. 1/4-3/4
 Bolted to case base
 Leatherette rigid case, top detaches
 Spring-loaded lid release under right frame edge
 Right-margin key on left "+" with MR key
 Double-space key "->" above Backspace key "<-" on right of keyboard
 "Germany USSR Occupied"
 What is middle chrome lever top right of carriage?
 What is black lever left of keyboard?

Barlock 4 13570 man port R 10 key S12-2

38 lbs
 No shift, 88 keys, "1" for "1"
 Steel & copper, octagonal plastic keytops
 white/black uppercase (vulcanite?)
 black/white lowercase & symbols (celluloid?)
 Bolted to base (2/4 hold-downs missing) with wood-screws
 Tin lid with carrying handle
 7/16-inch special spools
 Margin release right of keyboard
 No Tab, no Backspace
 Screw left rear by tension reel to adjust tension

Blickensderfer 5 1905 95185 man port var 10 elm S10-2

Iron frame, slant top oak case (broken)
 10 lbs in case
 Dhiatensor keyboard, 28 keys (8/10/10), double shift, lock on left
 Vulcanite keytops, w/b; "vV@" keytop missing
 inked by rollerpad, paper support
 Bell on right platen end
 Silver logo plate & patent plate on right of frame
 Roman element, "68 17 6 11" on concave base
 Folding spacebar
 no tab, no backspace

Blickensderfer 5 108134 man port var 10 elm S10-2

Iron frame, old portable phonograph case
 Qwerty keyboard, 28 keys (10/10/8), double shift, lock on left
 Vulcanite keytops, w/b; "eE\$" keytop missing, replaced with epoxy
 inked by rollerpad, paper support
 Bell on right platen end
 Brass logo plate, patent plate on right of frame painted (& illegible)
 Italic element, "124" on flat base, Script element, "208 11 5", concave base
 Folding spacebar
 no tab, no backspace

Blickensderfer 6 162440 man port var 10 elm S10-2

Aluminum frame, slant top oak case, 8.75 lbs
 Dhiatensor keyboard, 28 (8/10/10), double shift, lock on left
 Keytops concave celluloid in ring, b/w
 Inked rollerpad, paper support
 Bell under right end of carriage
 Brass logo plate, silver patent # plate
 Roman element, "Bj 6 20 81"
 Folding spacebar
 No tab, no backspace

Blickensderfer 8 1907 146174 man port var 10 elm S10-2

Iron frame, square oak veneer case, top lifts off
 14.5 lbs in case
 Qwerty keyboard, 28 keys (10/10/8), double shift, lock on left
 Back spacer on right of keyboard, 9-position manually operated tab
 Vulcanite keytops, w/b
 Inked by rollerpad, paper support
 Bell under right end of carriage
 Black logo plate & patent plate on right of frame
 Large Roman element, "1010 077" on concave base

Small Roman element, "9 10 463" on concave base
 Math (w/Greek) element, "499" on concave base
 Fixed spacebar
 Paper label in case top - Feb 15, 1907 "Price List of Supplies"
 to be ordered from the Fourth National Bank Building, Atlanta Ga

Brother	Wizard Truetype	1967 L6457529	man port R	11	key	S10-1
Burroughs		50A36833	man off R	12	key	S1-4

34 lbs
 Carriage shift, shift/lock left and right
 6 tab keys, 5 movable stops
 Black shiny/matte paint
 Glass keytops in ring, 10/11/11/10->84 characters
 Margin release, backspace, 3-way ribbon with lock
 0.5 x 2.25 inch special spools, auto-reverse design, manual rev. left above keyboard
 Platen ratchet release left end, very large spring grip release
 10.5-inch platen, 7-inch sub-platen roller
 Front scale and margin sets (ala Underwood)
 Olde English "B" in "Star of David", left end of paper table
 Back and side panels sound-deadened with rigid foam
 Back must be removed (8 screws) to adjust carriage belt tension.

Caligraph	21727	man off R	10	keyup	giv
Cole Steel	2-44631	man port R	11/44.3	key	S6-2

11 lbs in case
 Carriage shift, lock under left end
 steel; plastic case
 Auto ribbon reverse, standard spools
 SN right side of frame under wraparound lid
 lid release buttons left & right
 bolted to case base
 backspace right, margin release left of keyboard
 manual margins, no tabs
 Stencil position (no ribbon) may be set with red knob on right of frame under lid!
 "Made in Western Germany" plate on back
 horizontal tension drum - access would require unbolting base (4 bolts)
 Tan semi-gloss paint

Cole Steel	3-161454	man port R	10	key	S6-2
------------	----------	------------	----	-----	------

11 lbs in case
 Carriage shift, lock under left end
 steel; plastic case
 Auto ribbon reverse, standard spools
 SN on diagonal frame member under left end of carriage
 lid pulls off
 bolted to case base
 backspace right, margin release left of keyboard
 manual margins, no tabs
 3-way ribbon control (black, red, stencil position (no ribbon))
 under right end of carriage
 "Made in Western Germany" decal inside case lid
 horizontal tension drum - access would require unbolting base (4 bolts)
 Blue hi-gloss paint

Corona	3	1915 52492	man port R	10	key3b	S4-1
--------	---	------------	------------	----	-------	------

6 lbs (no case)
 Carriage shift, 3-bank
 Steel & aluminum
 Right platen knob only
 No ribbon reverse
 3-way ribbon control under left spool
 Small (1.5-inch) spools, 1/2-inch ribbon
 Back Space on right of frame
 "Corona Typewriter Company / Groton NY USA" on front of keyboard frame
 Patent dates 1904, 1910 on back
 Manual margins, no tabs
 Paper support prongs behind paper table
 horizontal tension drum under back of carriage

SN left rear bottom edge of frame

Corona 3 Folding 1921 430541 man port R 10 key3b S5-1

9 lbs in case
Carriage shift, 3-bank
Steel & aluminum
Right platen knob only
No ribbon reverse
2-way ribbon control under left spool
Small (1.5-inch) spools, 1/2-inch ribbon
No Back Space
"Corona Typewriter Company / Groton NY USA" on front of keyboard frame
Patent dates list of 13 (1913-1917) on back
Manual margins, no tabs
Paper support prongs behind paper table (broken off)
horizontal tension drum under back of carriage
drum cover plate has gold & red decal:
"Corona / Agency / Typewriter" / "John Rugen / 167 Thames Street / Newport RI"
SN right of center, rear inside edge of frame
Case made of wood, partial top hinged, covered in black fabric,
lined with floral wallpaper marked "...R.T. W.R.Co." and "Made in USA"
Latch on front (no lock), holes indicating handle was on back of case

Corona Special 1930 BX631650 man port R 10 key3b S5-1

9 lbs in case
Carriage shift, 3-bank
Steel & aluminum, black and deckle gold paint
Right platen knob only
No ribbon reverse
2-way ribbon control under left spool
Small (1.5-inch) spools, 1/2-inch ribbon
Back Space right of frame
Shift keys left & right
"LCSmith & Corona Typewriter Inc" on front of keyboard frame
"Corona / Made in USA" on back
Manual margins, no tabs
Paper support prongs behind paper table
horizontal tension drum under back of carriage
SN left rear inside edge of frame
Case made of wood, covered inside and out with black fabric
Latch with lock

Corona Folding 1930 X646373 man port R 10 key3b S5-1

9 lbs in case
Carriage shift, 3-bank
Steel & aluminum, black and deckle gold paint
Right platen knob only
No ribbon reverse
2-way ribbon control under left spool
Small (1.5-inch) spools, 1/2-inch ribbon
No Back Space
"Corona Typewriter Company / Groton NY USA" on front of keyboard frame
"Corona" in silver on back
Manual margins, no tabs
Paper support prongs behind paper table
horizontal tension drum under back of carriage
drum cover plate has gold & red decal:
SN left rear inside edge of frame
Case made of wood, covered inside and out with black fabric,
oiler missing from clamp
decal inside case lid "H. E. Steinke / Typewriters / Upper Darby Pa"
Latch with lock, bottom front of case hinged on fabric

Corona 1938 V689810 man port R 10 key3b S5-1

10 lbs in case
Carriage shift, 3-bank
Steel & aluminum, black paint
Right platen knob only
Auto ribbon reverse
2-way ribbon control under left spool
Small (1.5-inch) spools, 1/2-inch ribbon

No Back Space
 "Corona Typewriter Company / Groton NY USA" on front of keyboard frame
 Manual margins, no tabs
 Paper support prongs behind paper table
 horizontal tension drum under back of carriage
 SN left rear inside edge of frame
 Case made of wood, covered inside and out with black fabric
 Latch with lock, bottom front of case hinged on fabric

Corona Standard 1945 3C282253 man port cap 9 key S6-3

18 lbs in black case; brown deckle paint with dark brown stripe
 "LCSmith & Corona / Made in USA" on back of base
 84 keyboard, full block caps upper and lower, "1" key top left, zero slashed "÷"
 Basket shift, keys left and right, lock left, back-space,
 margin release (manual margins)
 Carriage lock right under knob
 Back-hinged lid
 S/N under lid, right, on on side frame bar
 Standard spools (1/2-inch ribbon) marked "Smith Corona / Made in USA"
 Ribbon reverse left of keyboard, 3-way control right

Corona D4P07930 man port R 10 key S5-1

13 lbs in black locking case with key
 Maroon with crinkle-gold panels front and sides
 Carriage shift
 84 keyboard
 Shift left & right, lock left, Margin Release & Backspace right
 "L C Smith & Corona Typewriters Inc" on front below keyboard
 "ALUMAG" in box, then "NJ" inverted on frame right of spacebar
 1/2-inch ribbon on 2-inch friction-drive spools under snap-on perforated lids
 marked "R" and "L" with rotation arrows
 3-way ribbon control left of keyboard, auto reverse
 S/N left rear inside bottom

Corona P5L04915 man port R 10 key S5-1

13 lbs in black locking case
 Blue with crinkle-green panels front and sides
 Carriage shift
 84 keyboard
 Shift left & right, lock left, Margin Release & Backspace right
 "L C Smith & Corona Typewriters Inc" on front below keyboard
 "ALUMAG" in box on frame right of spacebar
 1/2-inch ribbon on 2-inch friction-drive spools under snap-on perforated lids
 marked "R" and "L" with rotation arrows (left lid missing)
 3-way ribbon control on sector behind left spool, auto reverse
 Oiler and Brush in case top
 S/N left rear inside bottom

Corona 4L09116 man port R 10 key S5-1

13 lbs in black locking case
 Shiny black, "Corona" in silver on front above keyboard
 Carriage shift, carriage lock right
 84 keyboard
 Shift left & right, lock left, Margin Release (right margin only) & Backspace right
 Margin Release lever left aft for both sides
 "L C Smith & Corona Typewriters Inc" on front below keyboard
 "ALUMAG" in box on frame right of spacebar
 1/2-inch ribbon on 2-inch friction-drive spools (but spools & lids missing)
 3-way ribbon control on sector behind left spool, auto reverse
 S/N left rear inside bottom

Corona	Standard	1937 1C14756	man port R	10	key	S5-3
Corona	Four	1924 E400087	man port R	10	key	Prch
Corona	Four	1924 E604442	man port R	12	key	BT2
Corona	Four	1925 H211323	man port R	10	key	S4-5
Corona		1929 P5L04915	man port R	10	key	S5-1
Electromatic		1934 10447	elec off R	12	key	ET

Erika	5	1939	948075/5	man port R	10	key	S8-1
Erika Robotron			6807571	man port R	11/44.5	key	S9-1

Made by Robotron in Berlin DDR

Standard spools, 4-position control: bottom, low-top, none, high-top

1/4, 1/3, 1/2, 2/3, 3/4

Tabs+/-

Padded base board bolted to machine bottom, semi-rigid case covered in black leatherette

Everest	K2c	1958	576383	man port R	11/44.5	key	S7-2
Everest	K2	1959	598687	man port R	10	key	S7-2
Facit	ET3	1967	113453	elec off R	10	key	
Hall	Salem		7551	man port			giv
Hammond	12		60085	man port var	10	elm	S11-2
Hammond Multiplex	Folding	1921	F236185	man port var	11	elm	S9-3
Hammond Multiplex			109748	man off var	10	elm	LR
Hermes	Baby Fhwt		97985	man port R	10	key	S7-2
Hermes	Baby	1940	275618	man port R	10	key	S7-2
Hermes	Baby		239178	man port Cyr	10	key	S7-2
Hermes	Rocket	1961	5840205	man port R	10	key	S7-2
Hermes	Rocket	1964	6027634	man port R	10	key	giv
Hermes	Media 3	1961	3089076	man port R	10	key	LR
Hermes	3000	1962	3152753	man port R	10	key	S6-4
Hermes	3000	1964	3275068	man port R	12	key	S6-4
Hermes	3000		7532007	man port Re	12	key	S6-4
Hernes	3000		3349362	man port R	10	key	S11-1

Escapement pawl broken

Hermes	Ambassador	1953	734745	man off R	12.5/50	key	S7-3
Hermes	8	1954	8000250	man off R	10	key	S7-4
IBM	Model AA	1940	123017	elec off R	10	key	BT4
IBM	Model AA		332976	elec off R	12	key	BT6
IBM	Model AA		40-1-15252	elec off R	12	key	BT7
IBM	Model AA	1940	670920	elec off R	12	key	
IBM			M077950	elec off R	10	key	S9-5
IBM	Model AA		615050	elec off R	10	key	BT3
IBM	Selectric	1974	4798441	elec off var	12	elm	S10-4
IBM	Selectric		5735207	elec off var	10	elm	BT8
IBM	Selectric		9773194	elec off var	12	elm	S9-4
IBM	Executive		175762	elec off R	var	key	ET
IBM	Executive		2250695	elec off R	var	key	ET
Imperial	Good Comp	1930	EU293	man port R	10	key	S7-3
Imperial	Good Comp	1930	EB276	man port R	10	key	S7-3
Imperial	Model T		2C232	man port R	10	key	S7-3
L C Smith	2	1909	74239-2	man off R	10	key	S1-3
L C Smith	5	1918	X261879-5	man off R	10	key	S1-3
L C Smith	8	1916	289927-8	man off R	10	key	BT4
L C Smith	8	1924	506949-8	man off R	10	key	BT4
Mercedes	Prima		100176	man port R	10	key	S7-1
Monarch	Pioneer	1937	C110394	man port R	10	key	S1-1
oliver	3	1901	53161	man port R	10	keyst	S12-3
oliver	3	1901	155988	man port R	10	keyst	S12-3
oliver	5		206200	man port R	10	keyst	S11-3
oliver	Printype No.9	1915-19	633486	man off R	10	keyst	S11-3
oliver	Printype No.9		839197	man off R	10	keyst	

(2nd 14" long carriage)

Olivetti	Ventura	1969	5220557	man port R	10	key	S6-2
Olivetti	Lettera 25		8852543	man port R	10	key	BT4
Olivetti	Lettera 32		2277639	man port R	10	key	S9-1
Olivetti	Lettera 32	1969	5261190	man port	Arabl1/76	key	S7-3
Olivetti	Lettera 36		628182	elecport R	11.5/45	key	S10-4
Olivetti	Praxis 48	1969	5104054	elec off R	12	key	ET
Olivetti	Lexicon94C	1979	E13-0603729	elec off var	44	elm	BT7
Olivetti	Lexicon94C	1979	E18-0605367	elec off var	44	elm	BT2
Olivetti-Underwood	Studio 44	1951	345247	man port R	11/44.5	key	S6-4
Olivetti-Underwood	Lettera 22	1960	1377810	man port R	11	key	
Olympia		1953	353216	man port R	11	key	S7-1
Olympia	SM3 long	1957	1031283	man port it.	11	key	S6-1
Olympia	SM3	1958	1223163	man port R	10	key	
Olympia	Splend.33	1960	95-327919	man port R	10	key	
Olympia	SM 9	1965	2733178	man port R	11	key	S9-1
Olympia	SM long	1966	3062177	man port R	11	key	S6-1
Olympia	Socialite	1967	5-1487893	man port R	11	key	giv
Olympia	long car.		3898657	man port R	11	key	S6-2
Olympia	Deluxe		1207693	man port scr	11	key	S6-1
Olympia			2451823	man port scr	11	key	S6-2
Olympia			7027936	elecport R	10	key	giv
Olympia	8	1940	362967	man off R	10	key	BT4
Olympia	De Luxe 7	1959	7-380506	man off it.	11	key	S7-5
Olympia	7	1960	7-572792	man off R	10	key	S8-5
Orga Privat			145988	man port R	10	key	S7-4
Perkins	Brailler		Y1516				S9-1
Pittsburgh	Visible 10		11132	man port R	10	key	S11-3
R C Allen		1967	B2454497	man off cap	8	key	S10-3
Rem Rand	Bantam		C140793	man port Cap	10	key	S5-3
Remington	Portable	1921	NS12200	man port Sp	10	keyrl	S5-2
Remington	Portable	1923	NA31555	man port R	10	keyrl	S5-2
Remington	Portable	1926	NL62722	man port R	10	keyrl	S5-2
Remington	Portable	1927	NV75456	man port Rx	12	keyrl	S5-2
Remington	[JDLester]	1928	NP89270	man port R	10	keyrl	S5-2
Remington	Portable	1928	V114684	man port R	10	keyrl	S4-1
Remington	Model 5	1940	B82131	man port R	10	key	S3-1
Remington	Premier		ERP519454	man port R	10	key	S6-4
Remington	Quiet 1		P1125933	man port R	12	keykf	S3-3
Remington	Trav-Riter		TR139351	man port R	10	key	S6-5
Remington			B115406	man port R	10	key	S5-4
Remington			V501836	man port R	10	key	S5-3
Remington	Remette	1938	CR139346	man port R	12	key	S5-3
Remington	Remette	1941	CR295758	man port R	10	key	S5-2
Remington	Remette	1941	CR310997	man port R	12	key	S3-1
Remington	Noiseless		N1118050	man port Sp	12	keykf	S3-3
Remington	Noiseless		X444495	man off R	12	keykf	S2-3
Remington	Noiseless		T41216	man off R	10	keykf	BT3
Remington	Standard	1907	LK-11644	man off R	10	key	S8-4
Remington	11		RX95148	man off R	10	key	BT2
Remington	Paragon 12	1939	ZR 323002	man off R	10	key	S5-5
Remington			ZR303564	man off R	10	key	S8-3
Remington			E2103469	elec off R	12	key	S6-3
Remington	Model	1930	H123117	man port R	12	keykf	S3-1
Noiseless	Seven						

Remington Noiseless	Model Seven	H30987	man port R	12	keykf	S6-5
Remington Noiseless	Model Seven	H85288	man port R	10	keykf	S4-4
Remington Noiseless	8	1936 E31266	man port R	12	keykf	SP
Remington Noiseless	8	1936 E32800	man port R	12	keykf	SP
Remington Rand	1	1937 P121200	man port R	10	keykf	S1-2
Remington Rand		1937 P134803	man port R	12	keykf	S5-4
Remington Rand	1	1938 P139327	man port R	10	keykf	S5-2
Remington Rand	1	1938 PD164676	man port R	12	keykf	S5-3
Remington Rand	Remington	1937 V956451	man port R	10	key	S3-2
	5					
Remington Rand	Deluxe 5	1945 B1233399	man port R	10	key	S3-2
Remington Rand	Envoy	S1193886	man port R	10	key	S3-1
Remington Rand	Quiet-Riter	QR3494949	man port R	12	key	S10-5
Remington Rand		EBT115252	man port R	10	key	S3-1
Remington Rand	Noiseless	H160661	man port R	10	keykf	S3-2
Remington Rand	Noiseless	H152784	man port R	10	keykf	S3-3
Remington Rand	Noiseless	bbbbbbbbb	man port R	12	keykf	S5-3
Remington Rand	Noiseless	N1123006	man port R	12	keykf	S3-2
Remington Rand	Nsls 10	1934 X565130	man off R	10	keykf	BT3
Remington Rand		J324222	man off R	12	key	S5-4
Remington Rand		J786708	man off R	12	key	S8-4
Rex Visible	4	33482	man off R	10	key3b	S10-3
Royal	Junior	1935 J27802	man port R	10	key	S3-4
Royal	Portable	1938 0-715013	man port R	10	key	S3-4
Royal		1939 UR-78622	man port R	10	key	S2-2
Royal	QuietDeLux	1942 A970239	man port R	10	key	S3-5
Royal		1950 RF2860645	man port R	10	key	S3-4
Royal	QuietDeLux	1955 RA2990801	man port R	10	key	S3-3
Royal	Royalite	1955 RL3121835	man port R	10	key	S10-1
Royal		1959 2A4015170	man port R	12	key	S3-5
Royal	Mercury	1965 MC8202364	man port R	10	key	
Royal	Safari	1965 SA6048747	man port it.	12	key	
Royal	Aristocrat	1966 A 7224729	man port scr	12	key	S2-5
Royal	Futura 800	2A4910897	man port R	12	key	
Royal	QuietDeLux	AG3366962	man port R	12	key	
Royal	Keystone	RC2751855	man port R	10	key	S2-5
Royal	QuietDeLux	AG2100507	man port R	10	key	S2-4
Royal	QuietDeLux	AE3474648	man port R	12	key	S2-4
Royal	QuietDeLux	RA3008522	man port R	10	key	S1-4
Royal	Royaluxe 425	RTP5197645	man port R	10	key	BT8
Royal	Senior Cmp	RS3206812	man port R	12	key	S3-3
Royal	Swinger	NR8242022	man port R	10	key	S3-4
Royal		P203770	man port R	10	key	S3-4
Royal		P207117	man port R	12	key	S3-4
Royal	Medallion II	1977 CWL 3646701	elecport R	12	key	S10-5
Royal	1200	1802878	elecport R	10	key	S12-5
Royal	Standard	1908 10629	man off R	10	key	S1-2
Royal - 2 window	10	1923 X624127	man off R	10	key	S9-2
Royal - 1 window	10	X-1053436	man off R	10	key	BT3
Royal - 1 window	10	1927 X1070151	man off R	10	key	BT4
Royal - 1 window	10	1933 SX-1564005	man off R	10	key	S9-2
Royal	10	1936 KHM1899007	man off R	10	key	S2-3
Royal	KMM	1947 20-3384051	man off R	10	key	S4-4
Royal	Electress	GAE137756432	elec off R	12	key	
Royal		S-13-6193428	elec off R	10	key	BT3
Siemag		1952 058277-11t38	man off R	10	key	BT7

Signature (MW)	1003D	MO131777	elec off R	10	key	BT8
Smith Premier	4	1895 6071	man off Rx	10	keyup	S12-4

37 lbs in tinplate case
Double keyboard, blind, special Rx keys
1.5-inch ribbon, strike zone varies across ribbon with carriage motion
Manual and auto ribbon advance, manual reverse
Return lever on right, 1/2/3 line feed control
Vertical tension reel, steel drawband

Smith Premier	4	1895 21362	man off Ri	10	keyup	S12-4
---------------	---	------------	------------	----	-------	-------

37 lbs in tinplate case
Double keyboard, blind, fractions 1/8-7/8, ü sign
1.5-inch ribbon, strike zone varies across ribbon with carriage motion
Manual and auto ribbon advance, manual reverse
Return lever on right, 1/2/3 line feed control
Vertical tension reel, steel drawband

Smith-Corona	SilentSupr	1940	5T177548	man port R	10	key	S4-1
Smith-Corona	Silent Sup	1950	5T270312	man port R	10	key	S4-5
Smith-Corona	SkyWriter	1952	2Y123517	man port R	12	key	S4-5
Smith-Corona	Silent		4S-107727	man port R	12	key	S6-3
Smith-Corona	Silent		5S-110965	man port R	12	key	S4-5
Smith-Corona	Silent		4S201177	man port R	12	key	S5-5
Smith-Corona	Sterling		4A163980	man port R	10	key	S5-5
Smith-Corona	Classic 12		6LTV409302	man port R	10	key	S10-1
			HD31403				

Interchangeable type-slugs left and right, extra key right ?

Smith-Corona	Classic 12		6MLE100239H	man port G	10	keylb	S1-1
			HF34417				
Smith-Corona	Galaxie XII		6MLC560101	man port R	12	keyi	S11-1
			HN34446				
Smith-Corona	Super-G		7YP48012	man port R	10	key	S10-1
Smith-Corona	Corsair		5Y130065	man port R	10	key	S10-1
Smith-Corona	Electric220		6LRB207845	elecport R	12	key	S1-5
Smith-Corona	Electric	1960	5TE 181466	elecport scr	12	key	S10-5
Smith-Corona	Electric	1960	5TE 226892	elecport R	10	key	S2-5
Smith-Corona	Electra220	1973	6ELO 140463G	elecport R	10	key	S12-5

25 lbs in case
12/11/11/10=88, type heads at each end of segment interchangeable
power return, manual margin release and backspace
3-way ribbon controls, standard spools, auto and manual reverse, tab, set, clear
carriage lock at right end of carriage
electric drive rather noisy
removable platen
all papers - manual, bill of sale, warranty,
order forms for typeheads, ribbons, carbons

Smith-Corona	Super Corr.	1983	6ELEK140743G	elecport R	10	key	S12-5
--------------	-------------	------	--------------	------------	----	-----	-------

23.5 lbs in molded plastic case
Basket shift / tab +/- / carriage center locator
3-way Ribbon Control right of keyboard / standard spools
SN on right bottom
One interchangeable typehead
Copy pressure set (left of keyboard) and touch control (under front)
manual margins, power space
11.5-inch removable platen, paper support

Smith-Corona	SuperSpeed	1946	1A1974647	11 man off R	12	key	BT3
Smith-Corona	Pacemaker		PC5109256-11	man off R	12	key	BT7

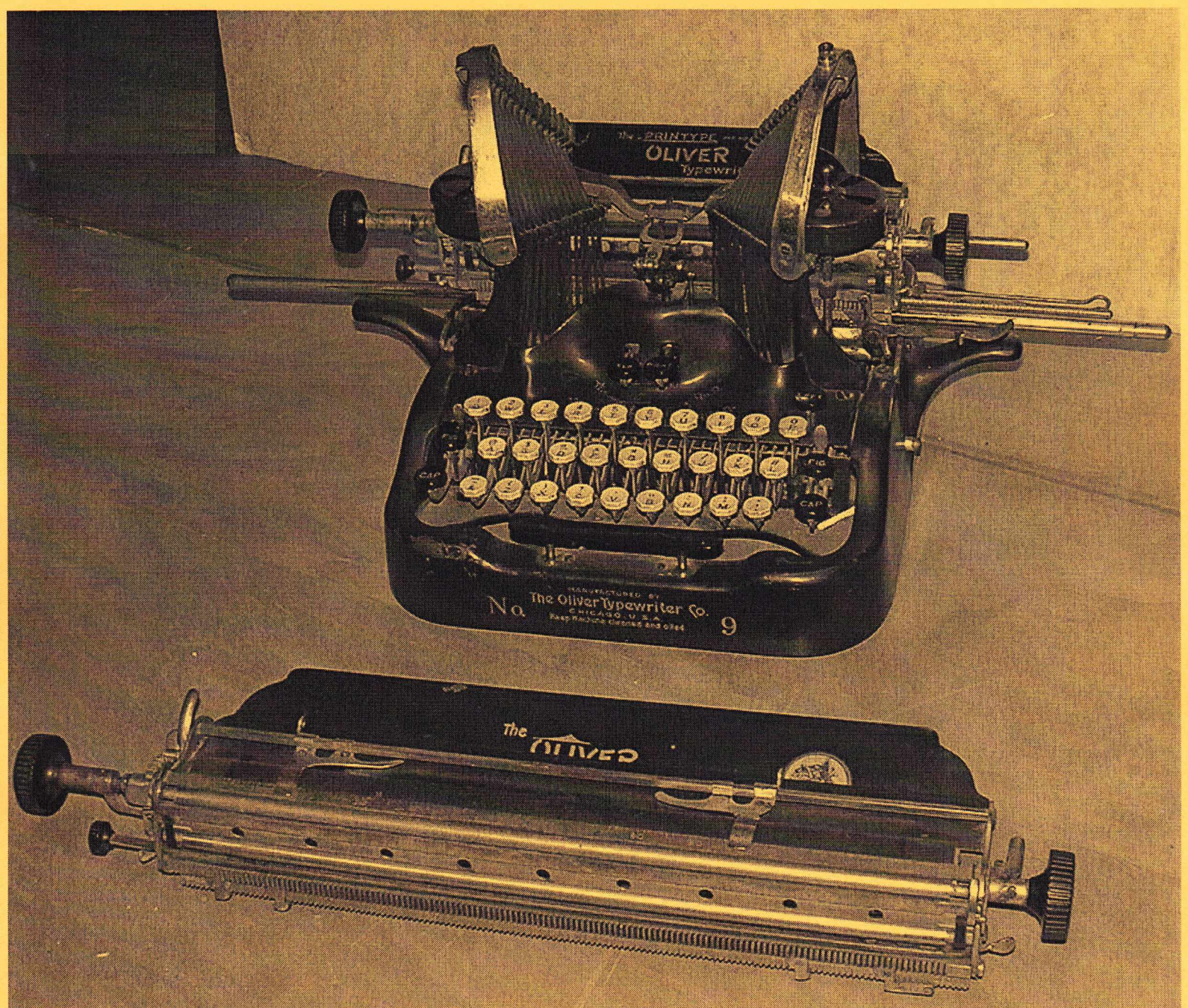
30 lbs

84 keyboard, tabs, shift left and right (lock left)
3-way ribbon control, auto reverse

Model	Manufacturer	Year	Serial Number	Port	Speed	Key	Notes
SCM	Ghia Super-G		7YP48012	man port R	10	key	S10-1
Plastic "Design by Ghia", made in England 84 keyboard, tabs preset to 20,30,40,50,60 3-pos ribbon control right, ribbon reverse left under lid(missing) 1/2-inch ribbon in 1.75-inch spools 3-pos force control left Power space-bar on left of space-bar							
Torpedo			1243921	man port sc	11.5/45.3	key	S6-1
Tower	Tabulator		5CT448429T	man port R	10	key	S11-1
[made for Sears by SCM]							
Triumph	Tippa	1964	4444544	man port R	10	key	S8-1
Triumph	Perfekt		85078	man port Cyr	10	key	S8-1
Underwood	Stan Port	1922	89152	man port R	10	key3b	S1-5
			90631				
Underwood	Stan Port	1924	104461	man port R	10	key3b	S1-5
			105710				
Underwood	Stan Port	1930	473424	man port R	10	key	S3-2
Underwood		1932	523348	man port R	10	key	S3-1
Underwood		1935	840745	man port R	10	key	S2-1
			836762				
Underwood	Universal		F975280	man port R	10	key	S2-1
15 lbs in case Standard spool, 3-way ribbon control behind right spool Serial Number behind left spool No tabs Manual and auto ribbon reverse and crank right side of frame Shift left and right, backspace left, margin release left 84 keyboard, no "1" Touch Control right of keyboard Carriage lock under left end of keyboard Lock on case							
Underwood	DeL Leader	1940	E1397684	man port R	10	key	S4-3
Underwood	Champion	1943	G-1531537	man port R	10	key	S2-1
Underwood	Noiseless	1935	1502261	man port R	10	keykf	S1-4
Underwood	Noislss 77	1946	1513275	man port R	10	keykf	S2-1
Underwood	DeLuxe		R2381569	man port R	10	key	S8-5
Underwood	5	1915	757005	man off R	10	key	BT3
Underwood	5	1922	1629817	man off R	10	key	BT2
Underwood	Noiseless	1932	N3883692	man off R	10	keykf	S2-4
Underwood	10 Noiseless	1947	5913912	man off R	10	keykf	BT3
Underwood	6	1932	4113002-11	man off R	10	key	S8-3
Underwood	6	1934	4159372-18	man off R	10	key	S4-3
Underwood	11	1935	4365462-11	man off R	12	key	BT7
Underwood		1950	E20-6650844	elec off R	10	key	BT4
Underwood-Ell-Fish		1931	547892	man port R	12	key	S2-1
		1931	549448				
Underwood-Ell-Fish	Nslss 77	1935	672881	man port R	10	keykf	S2-2
Underwood-Ell-Fish	Nslss 77	1936	719239	man port R	10	keykf	S2-2
Underwood-Olivetti	Lettera 22	1960	91377810	man port R	10	key	
Varityper			401912/9	elec off var	10	elm	S9-3
Varityper	DS			elec off var		elm	BT8
Vornado			4426 A	man port R	10	key	S7-2

Voss		207501	man port it.	10	key	S8-1
Wellington	2	3560	man port R	10	keykf	S12-2
Woodstock		1920 J120743	man off R	10	key	S8-2
Woodstock	5	1926 N164588	man off R	10	key	S8-2
Woodstock		1931 N317115	man off R	10	key	S4-2
Woodstock		1938 N522442E	man off R	12	key	S4-2

Most of these have an "R" in the "Face" column - a Roman typeface (as in books) was always the most popular. "scr" is Script, "it." is Italic, and there is one Arabic. The "Pitch" is the number of character per inch. The last column, "Loc" is a location code so that I can find a particular machine again!





UNDERWOOD STANDARD PORTABLE TYPEWRITER